

# Introducing



Ho, ho, ho! Santa's been hard at work in his workshop creating this holiday collection just for you! It doesn't get more jolly than this traditionally-colored release full of Christmas imagery. Spread "Christmas Cheer" to all your loved ones with handmade gifts decorated with this joyful collection. Then make memories even more magical with the coordinating stamps and die cuts inspired by this collection. It's certain to be a "Happy Holly Days" with this new collection!

"**Christmas Cheer**," includes 12 double-sided patterned papers, 3 double-sided distressed solid papers, 2 - sticker sheets, 1 6X6 pad, 1 brad pack, 1 6X13 chipboard, 1 sheet of enamel shapes, 1 set of flair buttons, 2 sets of decorative tape, 4 designer dies, 1 designer die and stamp set, 1 4X6 stamp set, and 1 collection kit.

© 2014 Echo Park Paper | [www.echoparkpaper.com](http://www.echoparkpaper.com)





CC72002 | FESTIVE STRIPES



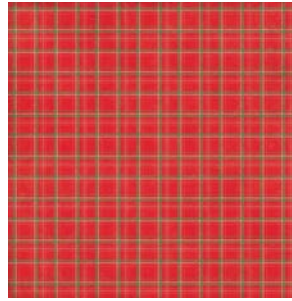
CC72003 | CHRISTMAS COUNTDOWN



CC72004 | CHRISTMAS ORNAMENTS



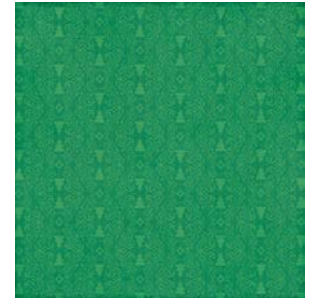
CC72005 | HO HO HO



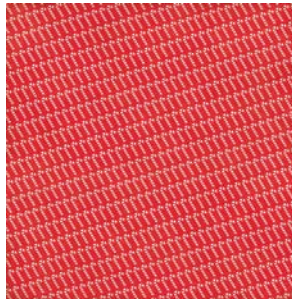
CC72006 | HOLIDAY PLAID



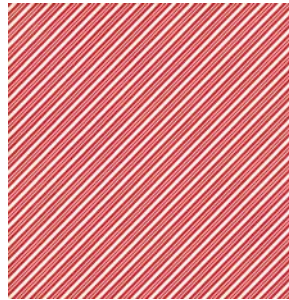
CC72007 | RUDOLPH



CC72008 | CHRISTMAS PHRASES



CC72009 | COZY QUILT



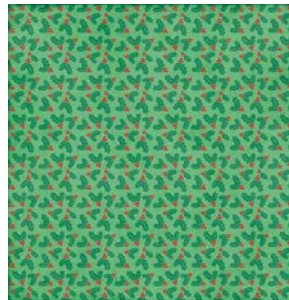
CC72010 | SNOW GLOBES



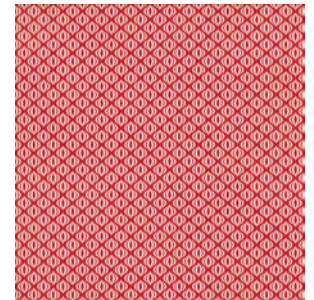
CC72011 | 3X4 JOURNALING CARDS



CC72012 | 4X6 JOURNALING CARDS



CC72013 | BORDER STRIPS







CC72016 | 12 x 12 COLLECTION KIT



CC72014 | 12 x 12 ELEMENT STICKER



CC72015 | 12 x 12 ALPHA STICKER



CC72023 | Paper Pad

## Coordinating Distressed Solids



CC72017 | RED / MINT



CC72018 | GREEN / CREAM



CC72019 | CHALKBOARD / LT. GREEN





# Introducing



CC72020 | BRADS



CC72027 | FLAIR BUTTONS



CC72026 | ENAMEL SHAPES



CC72022 | CHIPBOARD

© 2014 Echo Park Paper | [www.echoparkpaper.com](http://www.echoparkpaper.com)



Distributed in the UK & Europe by Stampbox Ltd tel: 01435 830176 [www.stampbox.co.uk](http://www.stampbox.co.uk)

# Introducing



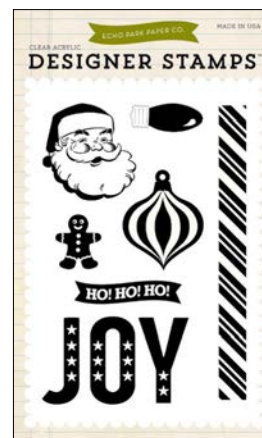
CC72028 | SANTA  
DECORATIVE TAPE



CC72029 | HOLLY BERRIES  
DECORATIVE TAPE



EPDIESTAMP4 |  
CHRISTMAS CHEER



EPSTAMP33 |  
JOY



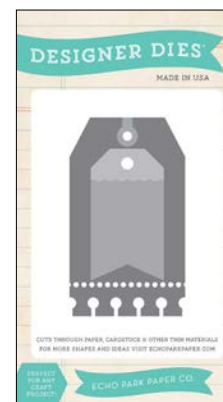
EPPDIE71 |  
MERRY  
ORNAMENT



EPPDIE72 |  
CHRISTMAS  
LIGHTS



EPPDIE73 |  
WREATH



EPPDIE74 |  
HOLIDAY TAG

© 2014 Echo Park Paper | [www.echoparkpaper.com](http://www.echoparkpaper.com)







CC72002 | FESTIVE STRIPES A & B





CC72003 | CHRISTMAS COUNTDOWN A & B

© 2014 Echo Park Paper | [www.echoparkpaper.com](http://www.echoparkpaper.com)

Distributed in the UK & Europe by Stampbox Ltd tel: 01435 830176 [www.stampbox.co.uk](http://www.stampbox.co.uk)







CC72004 | CHRISTMAS ORNAMENTS A & B





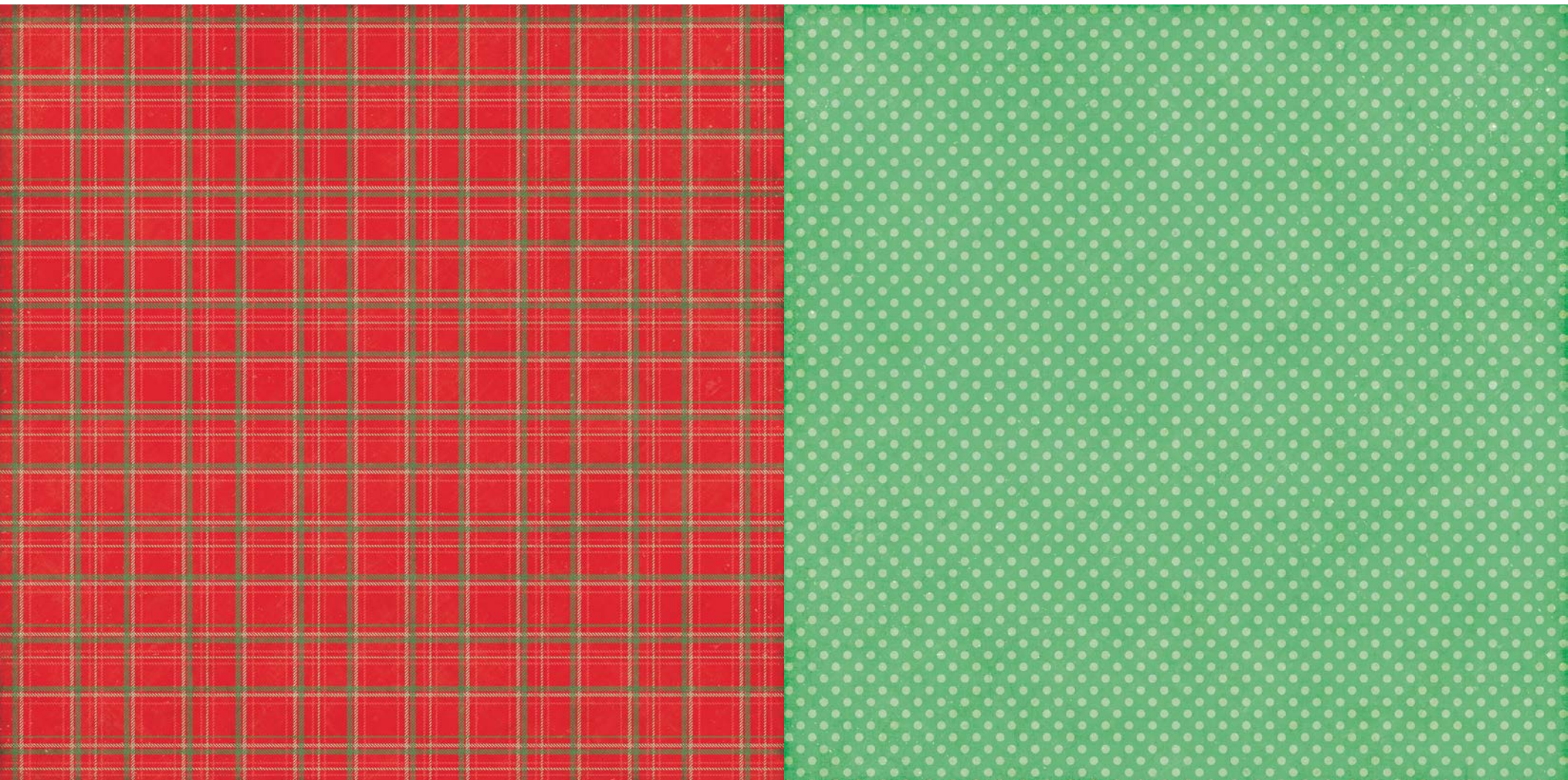
CC72005 | HO HO HO A & B

© 2014 Echo Park Paper | [www.echoparkpaper.com](http://www.echoparkpaper.com)

Distributed in the UK & Europe by Stampbox Ltd tel: 01435 830176 [www.stampbox.co.uk](http://www.stampbox.co.uk)







CC72006 | HOLIDAY PLAID A & B

© 2014 Echo Park Paper | [www.echoparkpaper.com](http://www.echoparkpaper.com)

Distributed in the UK & Europe by Stampbox Ltd tel: 01435 830176 [www.stampbox.co.uk](http://www.stampbox.co.uk)







CC72007 | RUDOLPH A & B



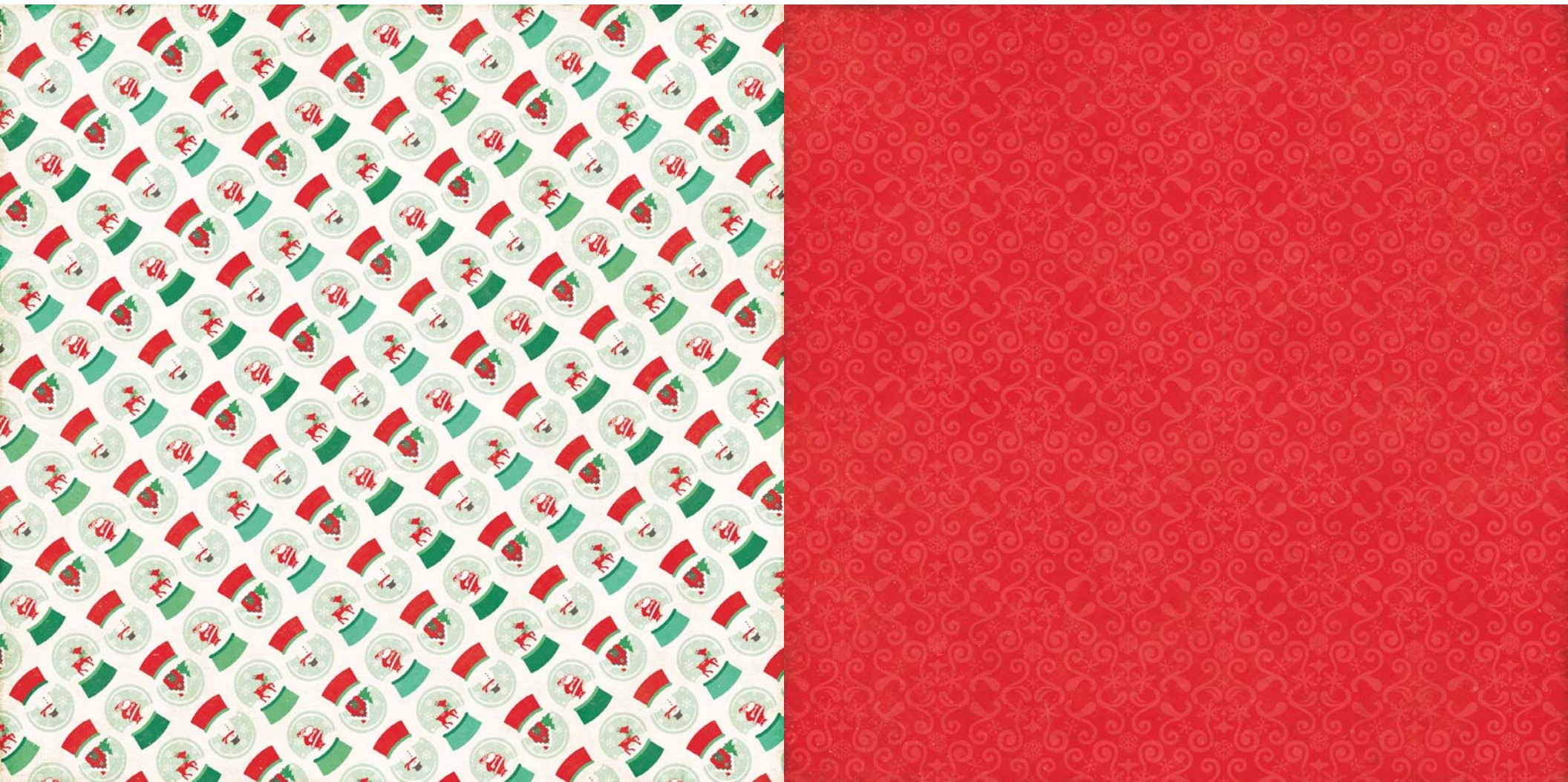






CC72009 | COZY QUILT A & B





CC72010 | SNOW GLOBES A & B

© 2014 Echo Park Paper | [www.echoparkpaper.com](http://www.echoparkpaper.com)

Distributed in the UK & Europe by Stampbox Ltd tel: 01435 830176 [www.stampbox.co.uk](http://www.stampbox.co.uk)







CC72011 | 3X4 JOURNALING CARDS A & B





CC72012 | 4X6 JOURNALING CARDS A & B





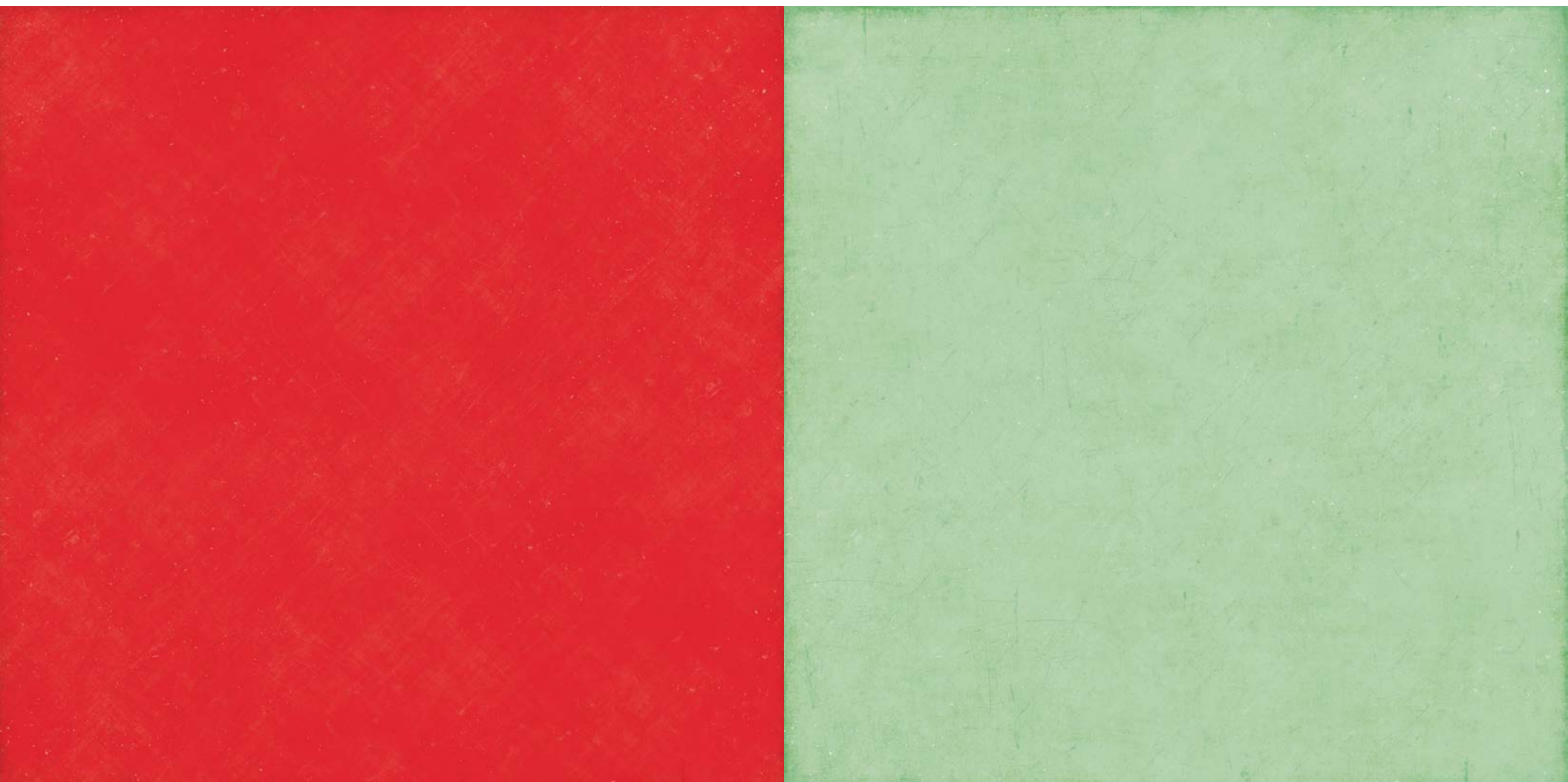
CC72013 | BORDER STRIPS A & B

© 2014 Echo Park Paper | [www.echoparkpaper.com](http://www.echoparkpaper.com)

Distributed in the UK & Europe by Stampbox Ltd tel: 01435 830176 [www.stampbox.co.uk](http://www.stampbox.co.uk)







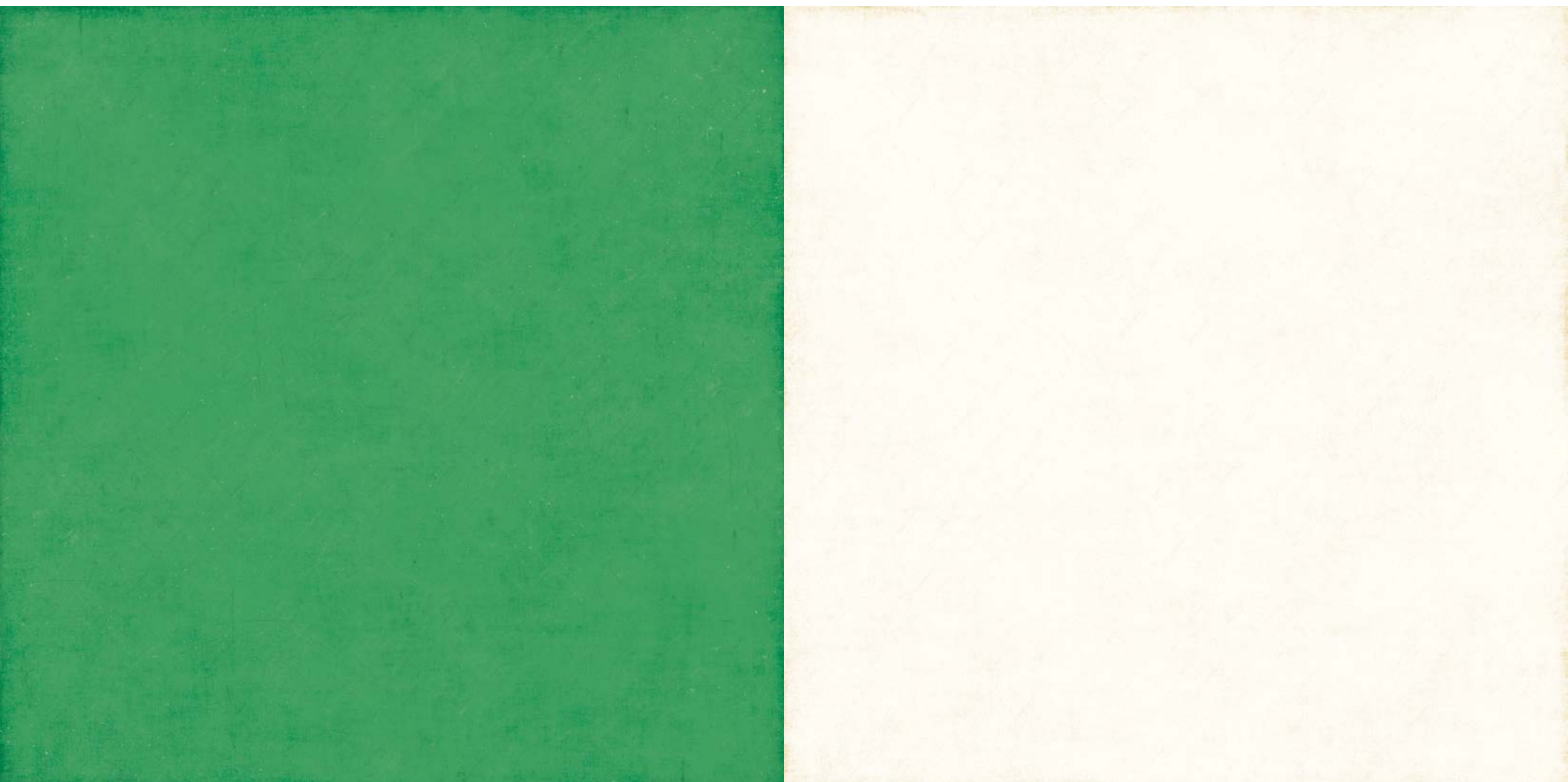
CC72017 | RED / MINT A & B

© 2014 Echo Park Paper | [www.echoparkpaper.com](http://www.echoparkpaper.com)

Distributed in the UK & Europe by Stampbox Ltd tel: 01435 830176 [www.stampbox.co.uk](http://www.stampbox.co.uk)







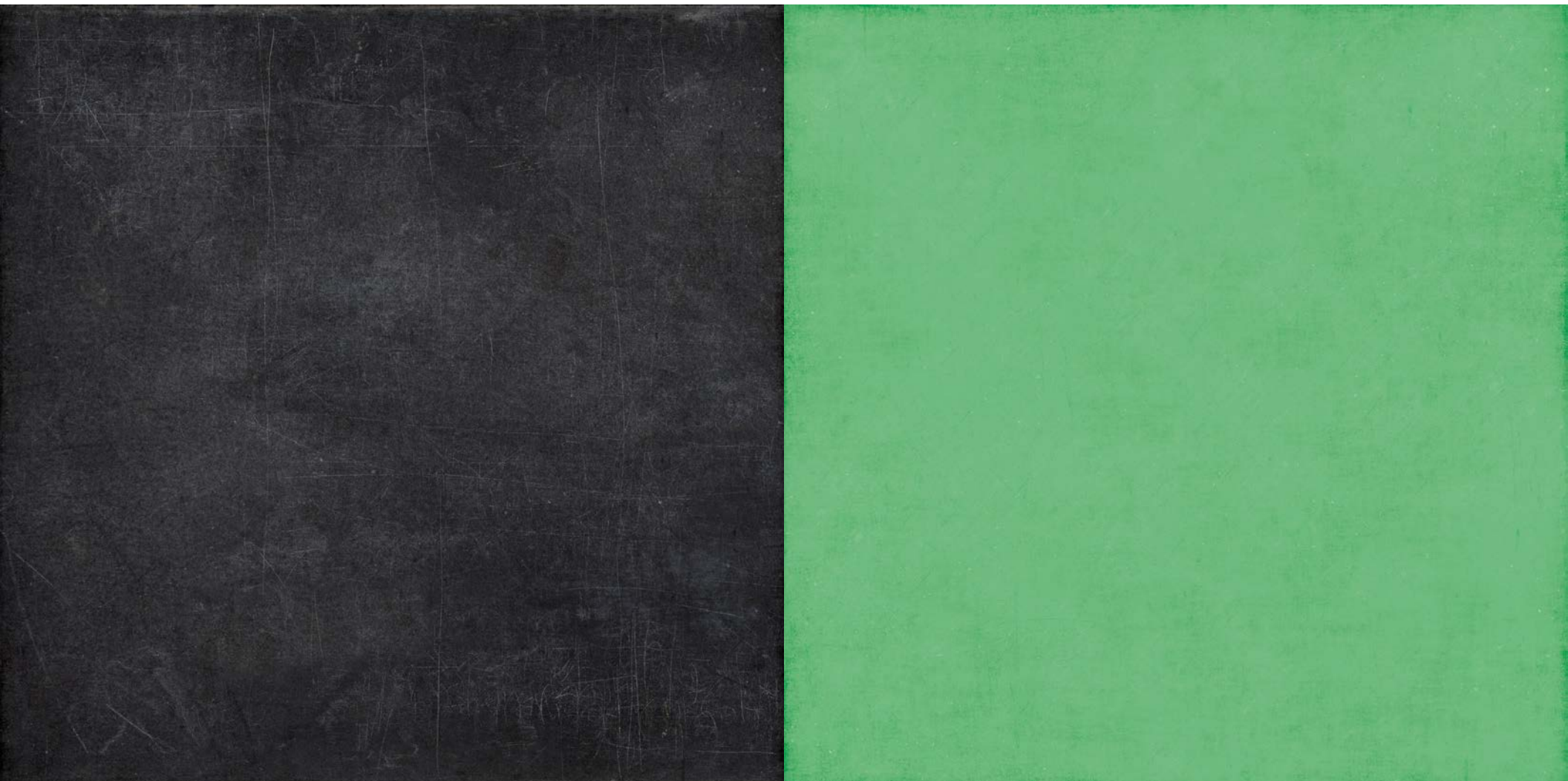
CC72018 | GREEN / CREAM A & B

© 2014 Echo Park Paper | [www.echoparkpaper.com](http://www.echoparkpaper.com)

Distributed in the UK & Europe by Stampbox Ltd tel: 01435 830176 [www.stampbox.co.uk](http://www.stampbox.co.uk)







CC72019 | CHALKBOARD / LT. GREEN A & B

© 2014 Echo Park Paper | [www.echoparkpaper.com](http://www.echoparkpaper.com)

Distributed in the UK & Europe by Stampbox Ltd tel: 01435 830176 [www.stampbox.co.uk](http://www.stampbox.co.uk)

