

Introducing



Capture your memories throughout the year with this exciting new collection. With themed elements and papers, as well as, dynamic, go-with-everything patterns, you can both document your monthly memories in your scrapbooks or create your own personalized calendar. This release includes a traditional collection kit, coordinating die cut "Pocket Page Cards," and a monthly paper pack. Look for matching dies, stamps, and other "Designer Products" that will make your seasonal projects shine.

"Through The Year," includes 24 double-sided patterned papers, 2 - sticker sheets, 3X4 memo card set, 4X6 memo card set, 4 designer dies, 1 4X6 stamp set, and 2 collection kit.

© 2014 Echo Park Paper | www.echoparkpaper.com

Distributed in the UK & Europe by Stampbox Ltd tel: 01435 830176 www.stampbox.co.uk



TTY76002 | JANUARY TO APRIL



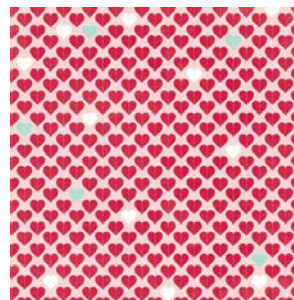
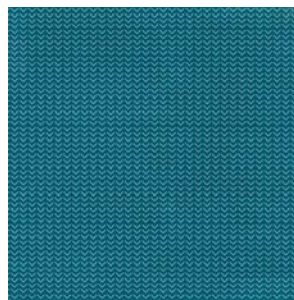
TTY76003 | MAY TO AUGUST



TTY76004 | SEPTEMBER TO DECEMBER



TTY76005 | SNOWFLAKE FLURRY



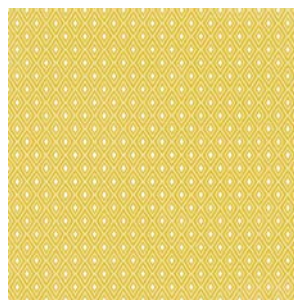
TTY76006 | LOVELY HEARTS



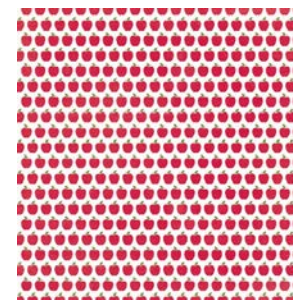
TTY76007 | RAINY DAY



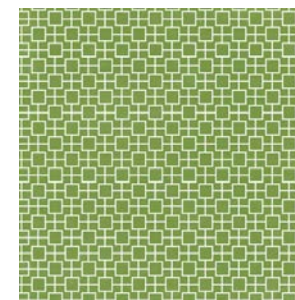
TTY76008 | BEAUTIFUL FLOWERS



TTY76009 | MONTH BORDER STRIPS



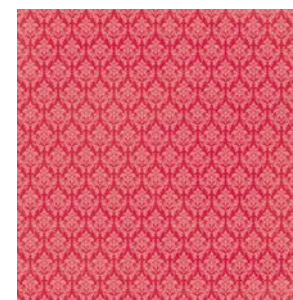
TTY76010 | APPLES



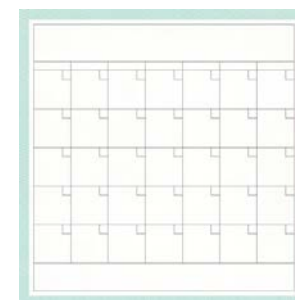
TTY76011 | DAY OF THE WEEK



TTY76012 | TRICK OR TREAT



TTY76013 | RED DAMASK





TTY76017 | JANUARY



TTY76018 | FEBRUARY



TTY76019 | MARCH



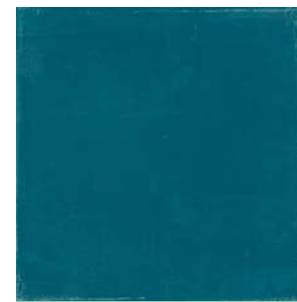
TTY76020 | APRIL



TTY76021 | MAY



TTY76022 | JUNE



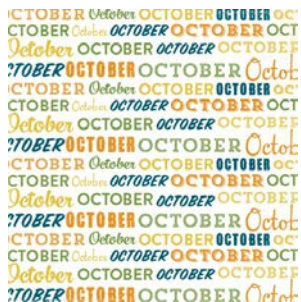
TTY76023 | JULY



TTY76024 | AUGUST



TTY76025 | SEPTEMBER



TTY76026 | OCTOBER



TTY76027 | NOVEMBER



TTY76028 | DECEMBER





TTY76014 | 12 x 12 ELEMENT STICKER



TTY76015 | 12 x 12 ALPHA STICKER

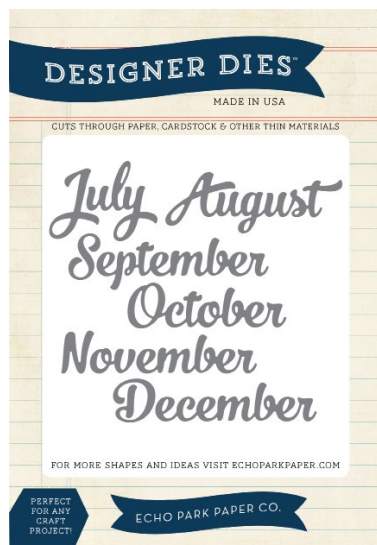


TTY76030 | 3X4 MEMO



TTY76031 | 4X6 MEMO

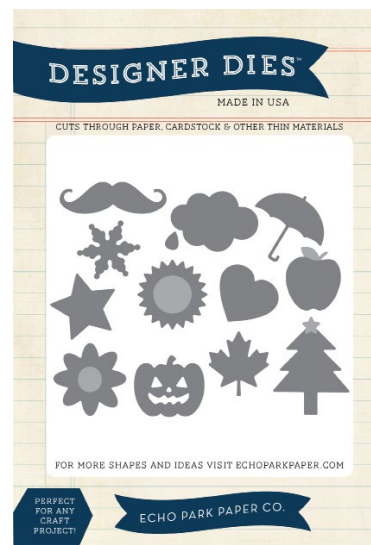
Introducing



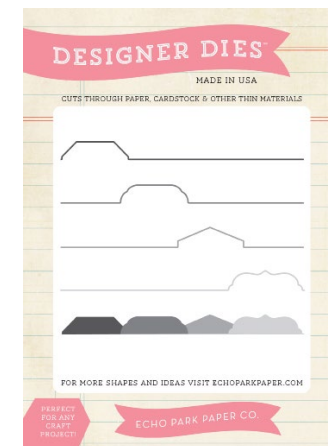
TTY76036 |
JAN-JUNE MONTHS DIE SET



TTY76035 |
JULY-DEC. MONTHS DIE SET



TTY76034 |
THROUGH THE YEAR DIE SET



TTY76033 | FILE TAB DIE SET



TTY76032 |
CALENDAR STAMP

© 2014 Echo Park Paper | www.echoparkpaper.com





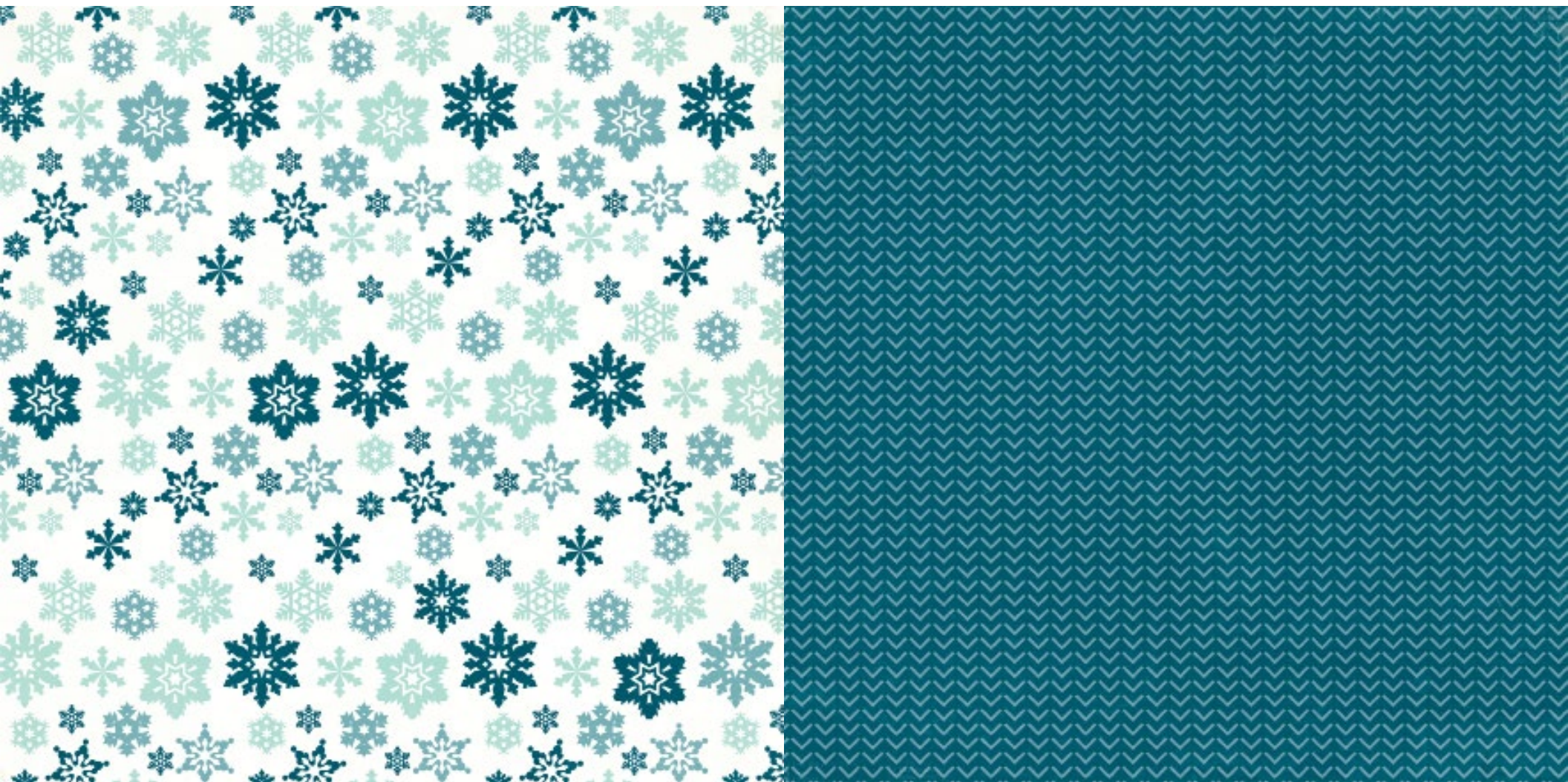
TTY76002 | JANUARY TO APRIL A & B



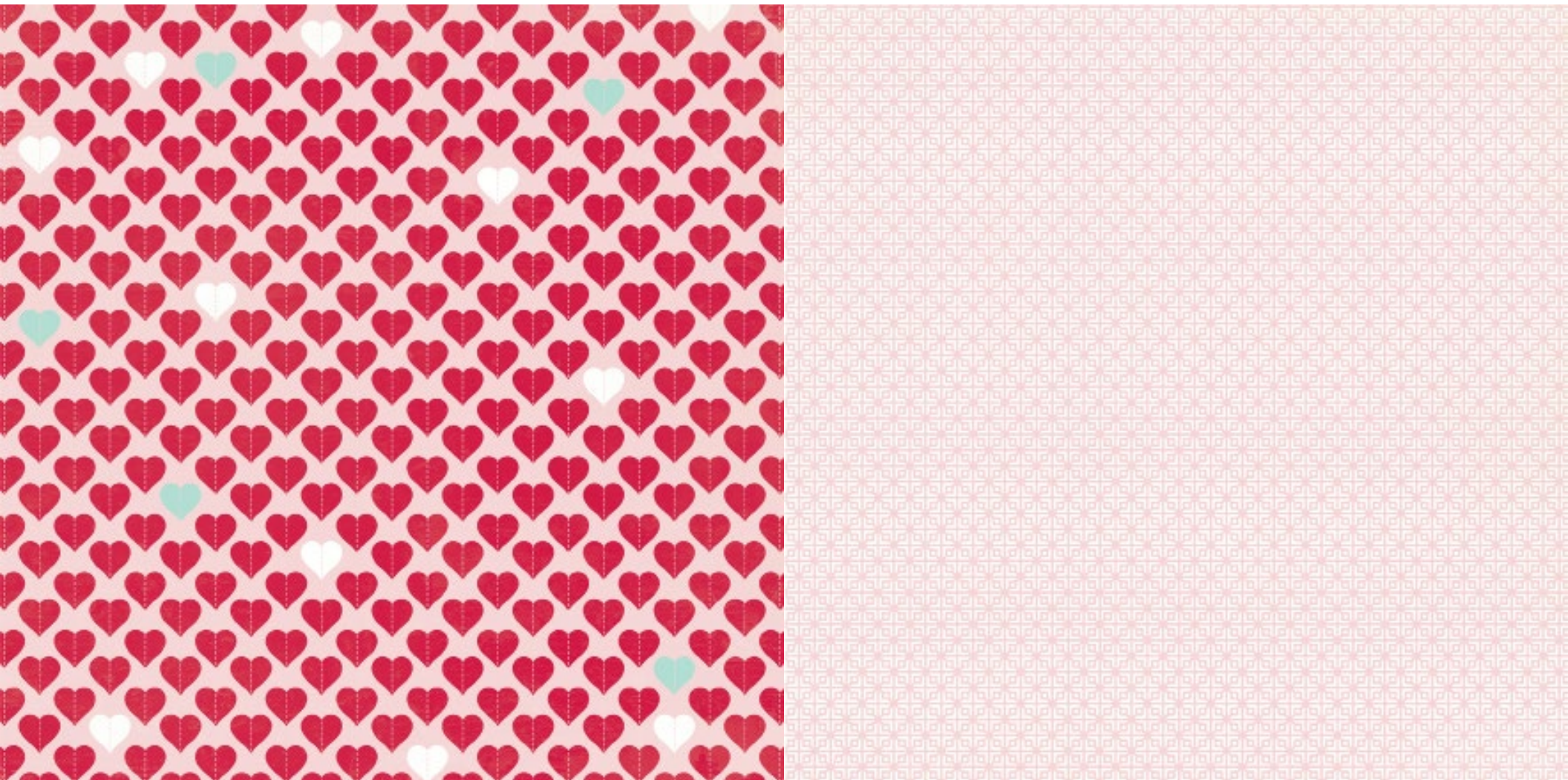
TTY76003 | MAY TO AUGUST A & B



TTY76004 | SEPTEMBER TO DECEMBER A & B



TTY76005 | SNOWFLAKE FLURRY A & B



TTY76006 | LOVELY HEARTS A & B



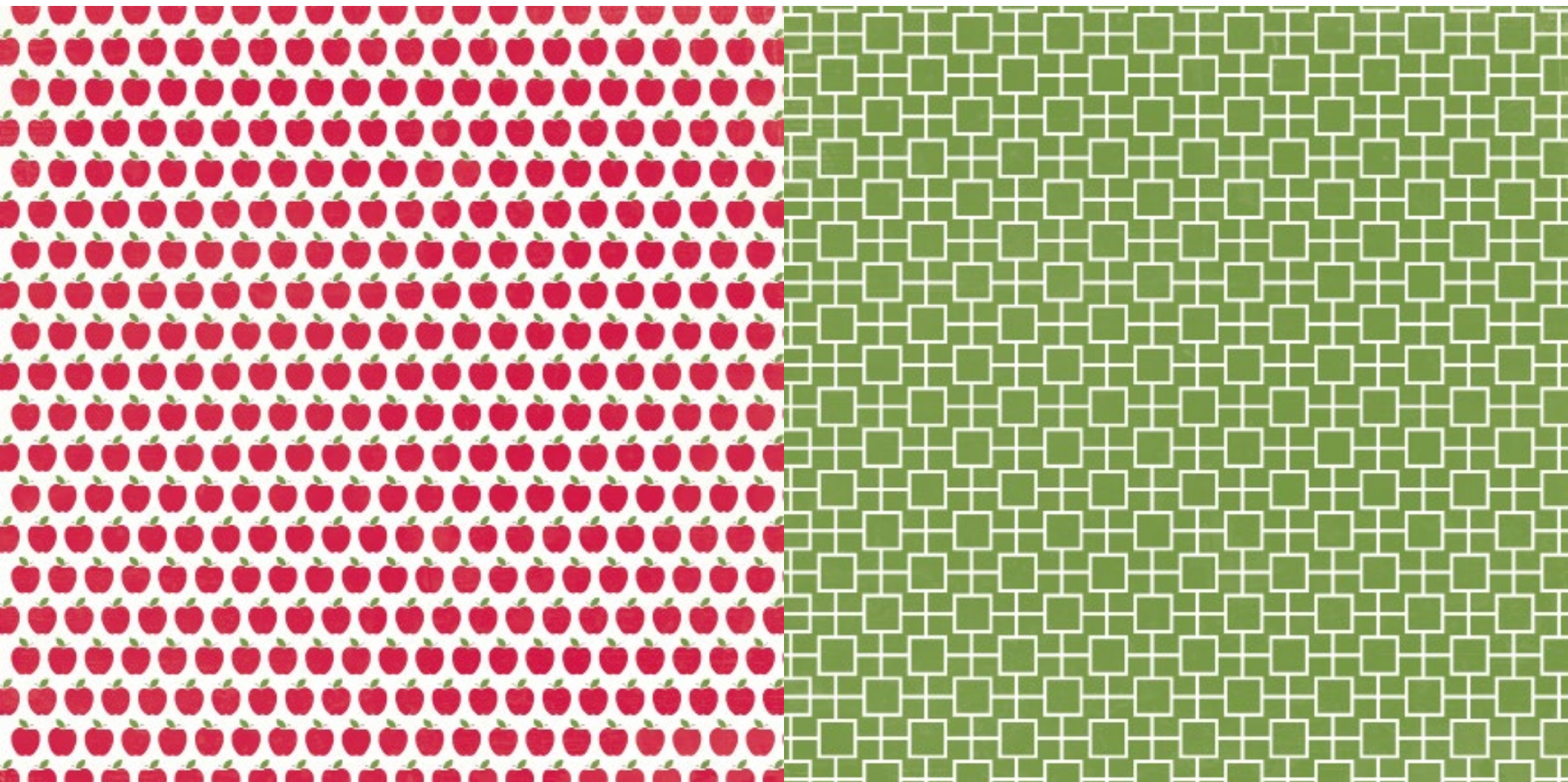
TTY76007 | RAINY DAY A & B



TTY76008 | BEAUTIFUL FLOWERS A & B



TTY76009 | MONTH BORDER STRIPS A & B



TTY76010 | APPLES A & B



TTY76011 | DAY OF THE WEEK A & B

© 2014 Echo Park Paper | www.echoparkpaper.com



Distributed in the UK & Europe by Stampbox Ltd tel: 01435 830176 www.stampbox.co.uk

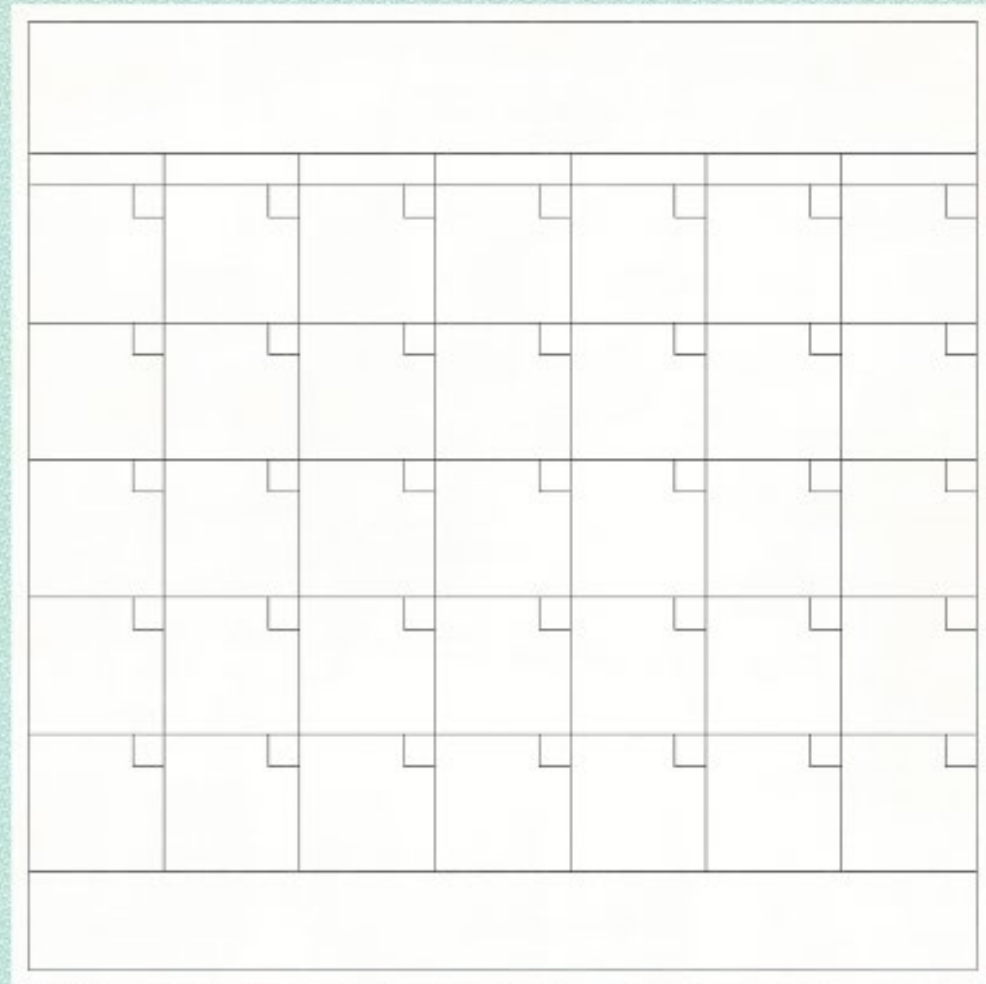
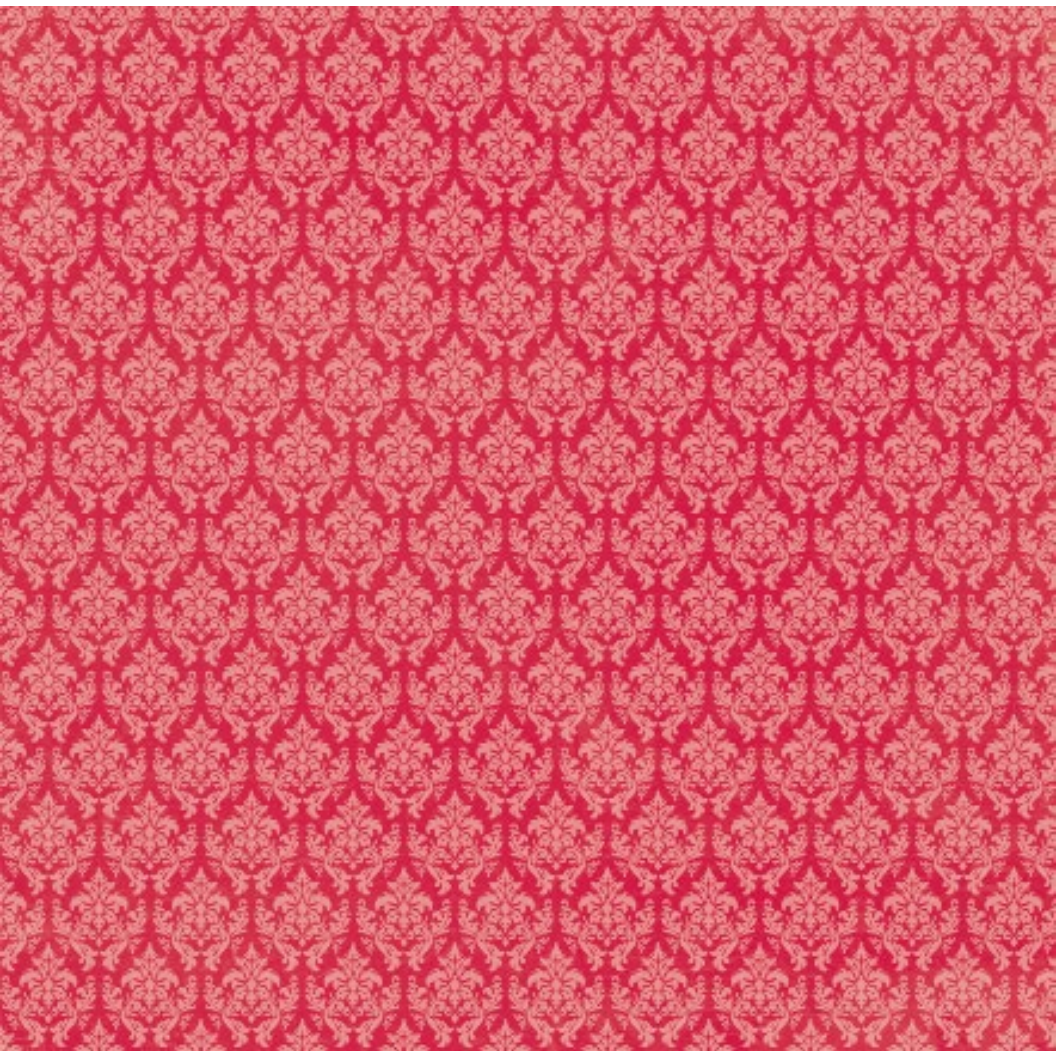


TTY76012 | TRICK OR TREAT A & B

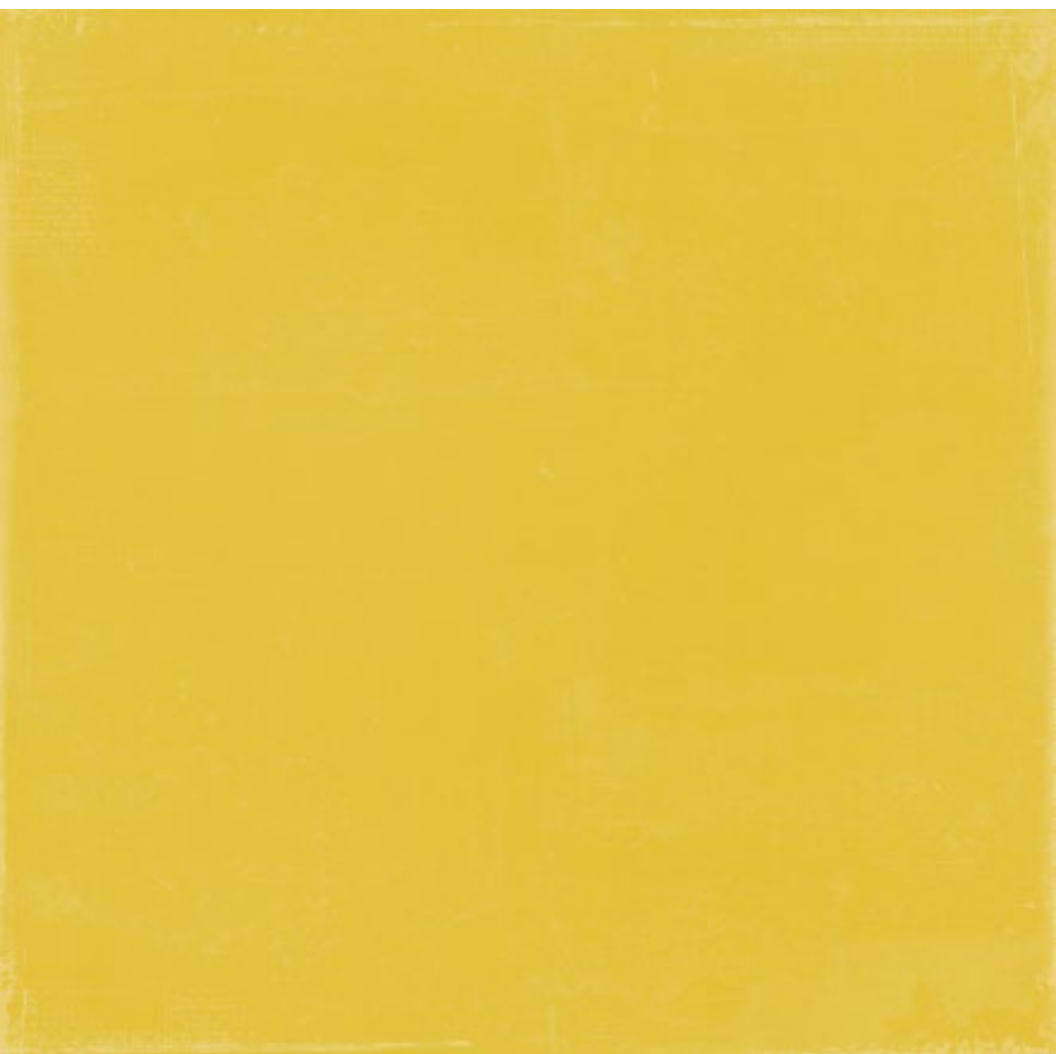
© 2014 Echo Park Paper | www.echoparkpaper.com

Distributed in the UK & Europe by Stampbox Ltd tel: 01435 830176 www.stampbox.co.uk





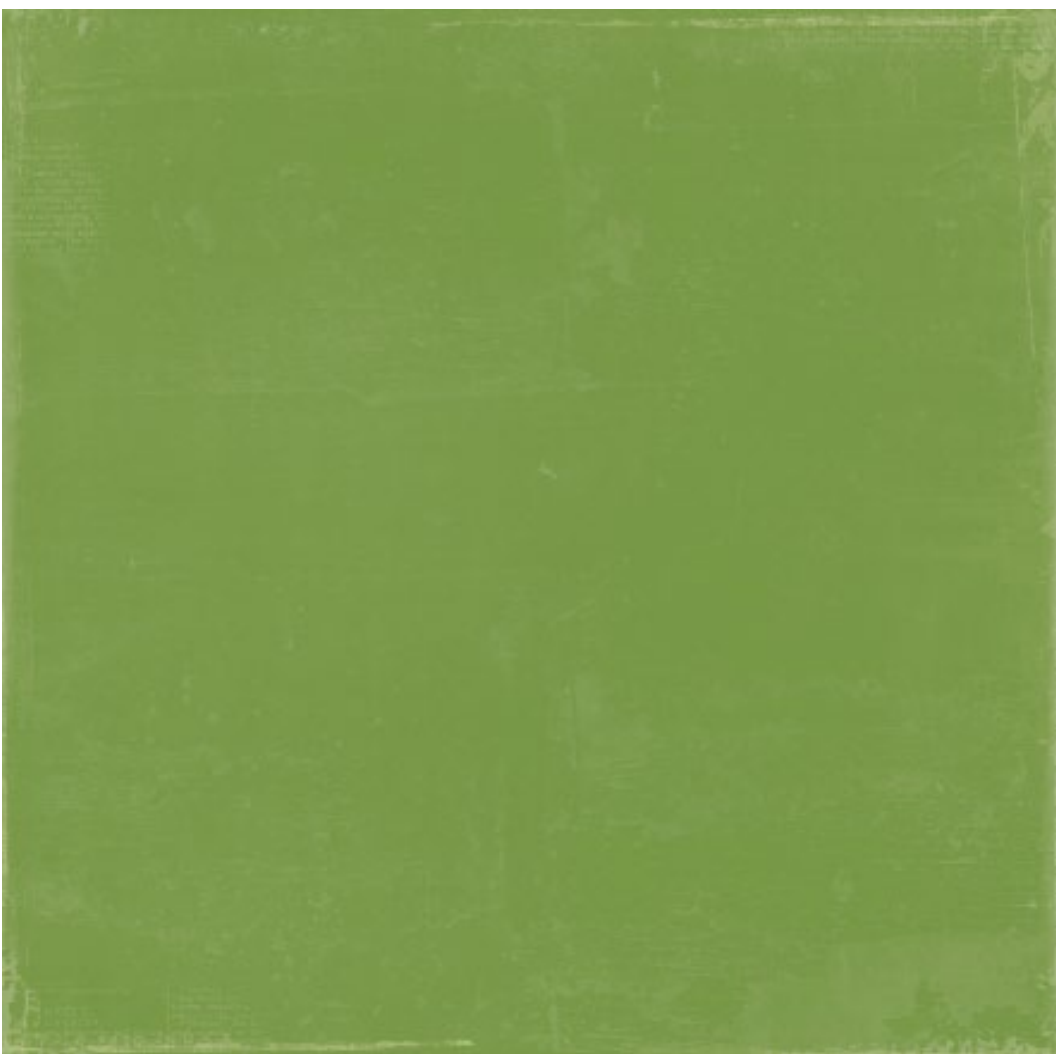
TTY76013 | RED DAMASK A & B



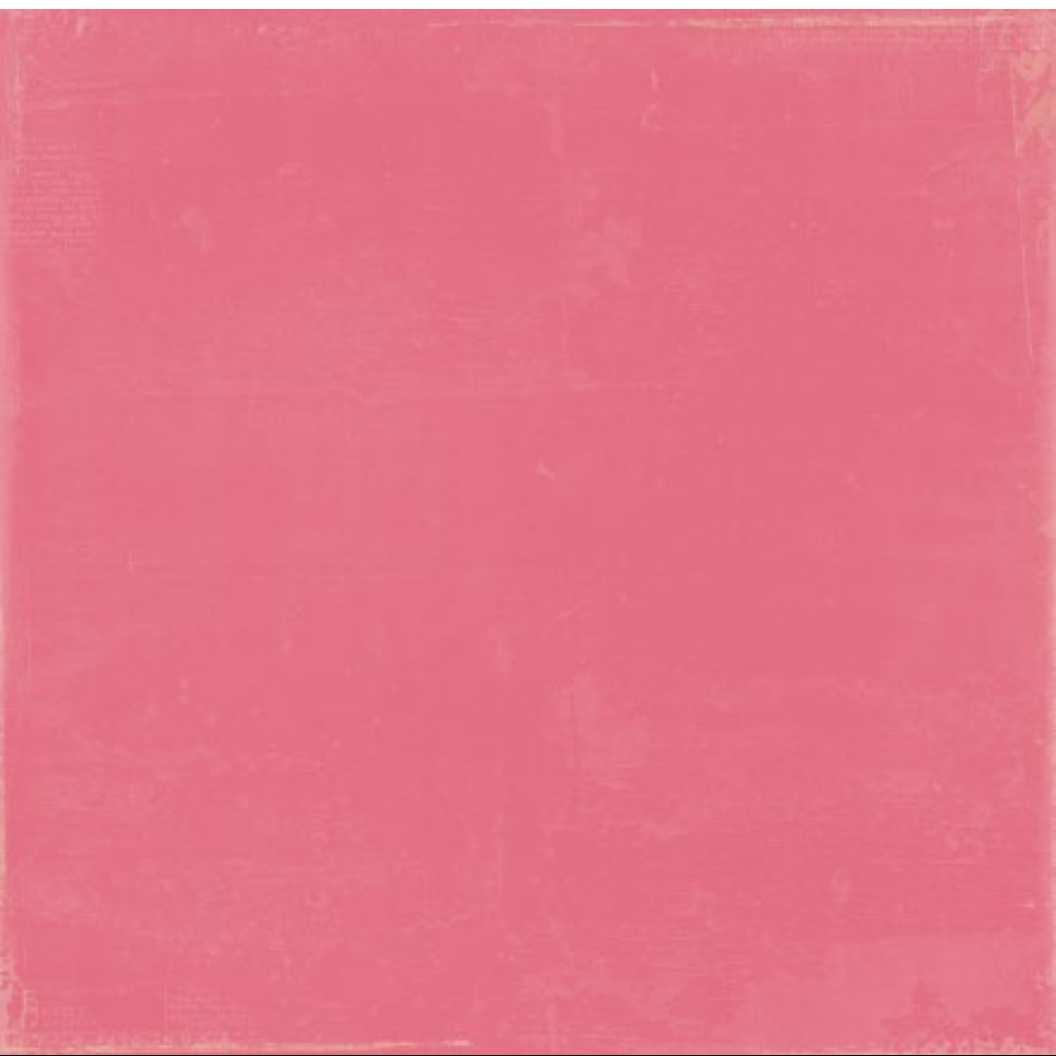
TTY76017 | JANUARY A & B



TTY76018 | FEBRUARY A & B



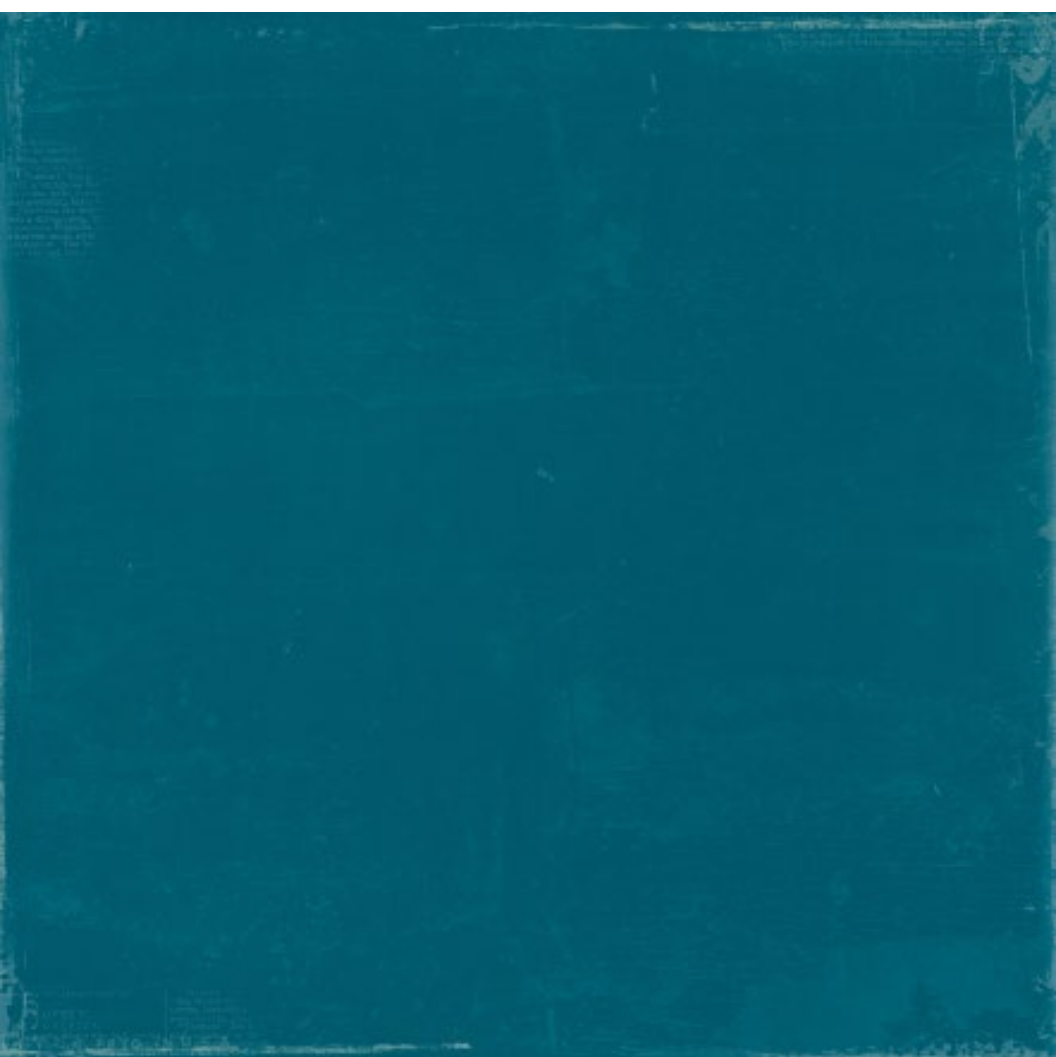
TTY76019 | MARCH A & B



TTY76020 | APRIL A & B



TTY76021 | MAY A & B



TTY76022 | JUNE A & B



TTY76023 | JULY A & B



TTY76024 | AUGUST A & B



TTY76025 | SEPTEMBER A & B



TTY76026 | OCTOBER A & B

© 2014 Echo Park Paper | www.echoparkpaper.com

Distributed in the UK & Europe by Stampbox Ltd tel: 01435 830176 www.stampbox.co.uk





TTY76027 | NOVEMBER A & B

© 2014 Echo Park Paper | www.echoparkpaper.com



Distributed in the UK & Europe by Stampbox Ltd tel: 01435 830176 www.stampbox.co.uk



TTY76028 | DECEMBER A & B

© 2014 Echo Park Paper | www.echoparkpaper.com

Distributed in the UK & Europe by Stampbox Ltd tel: 01435 830176 www.stampbox.co.uk

